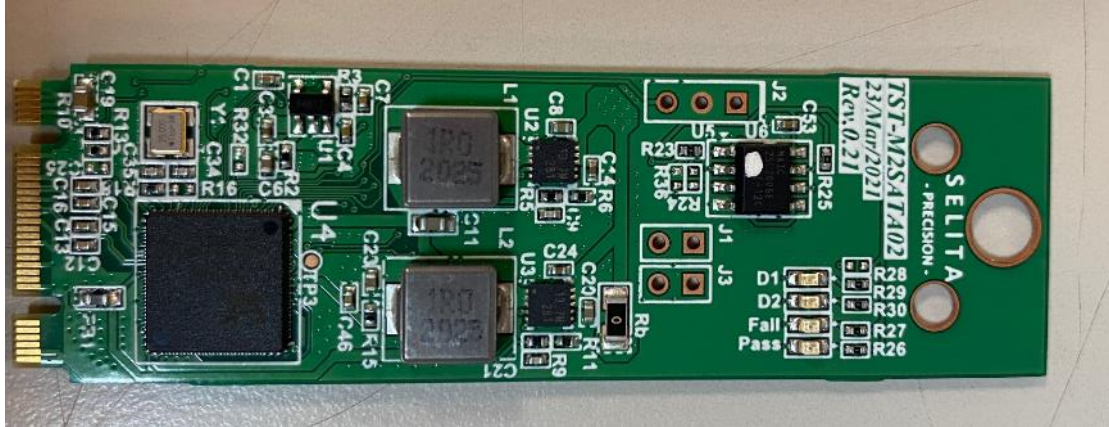


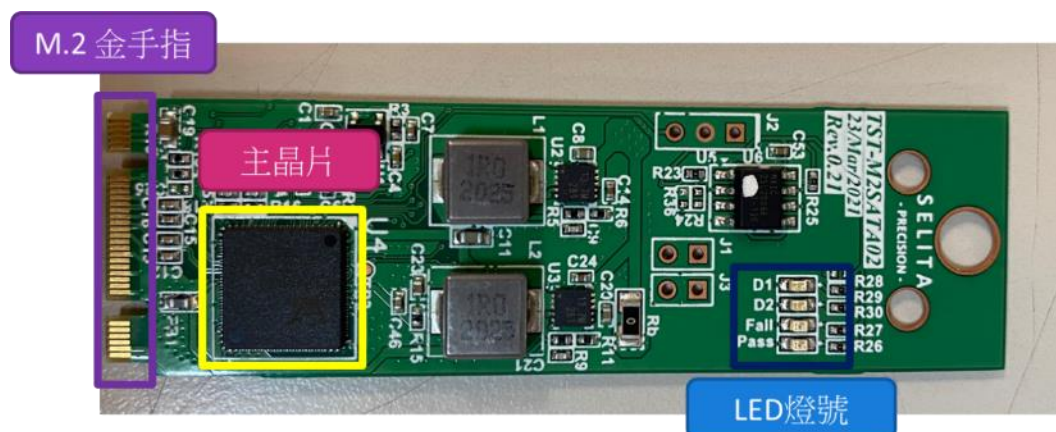
# TST-M2SATA02 Rev0.1

## TST-M2SATA02 測試治具



### 一、規格說明

1. 功能：SATA 測試治具，適用 Intel/AMD 平台，網通機種
2. 規格：SATA3.0 向下支援 SATA2.0/1.0，內建 32MB RAM Disc
3. 可測試 SATA 讀寫速率，可達 500MB/S
4. 測試環境：WIN10、UEFI、DOS、LINUX
5. 具有 Pass/Fail 燈號，讀寫指示燈
6. IO 說明：



# TST-M2SATA02 Rev0.1

## 測試程式說明

### 1. 測試環境：EFI、LINUX

甲、網通 EFI 測試程式 m2satagbt.efi

執行 m2satagbt.efi 程式即會顯示相關參數說明及主程式指令範例。

```
fs0:\efi\prog2\SATA\M2SATA02\GENERAL\001> m2satagbt
SELITA M2SATA02 sum Chk Rev.1.00(C)CopyRight by Giga-Byte Technology Co.
GIGABYTE--Date: May 11 2021 :Time: 17:23:12 * Edited by Joshua.Ans--GIGABYTE
HELP message:
Usage: m2satagbt [/s sum]
PORT:
    1./s sum :The sum is set SATA360 devie verify number.
    2./RST   :Set HD reset cmd not running.
Example:
m2satagbt /s 2
The return value:
0:Check All PASS!
-1:Check Fail!
```

m2satagbt.efi /s [數量]

計算 M2SATA02 裝置數量

```
fs0:\efi\prog2\SATA\M2SATA02\GENERAL\001> m2satagbt /s
SELITA M2SATA02 sum Chk Rev.1.00(C)CopyRight by Giga-Byte Technology Co.
GIGABYTE--Date: May 11 2021 :Time: 17:23:12 * Edited by Joshua.Ans--GIGABYTE
2 AHCI Host Controller(s) found, 0 IDE IO Base found
Detect AHCI HBA:f2000000h==>
Not M2SATA02 device!!
Not M2SATA02 device!!
Get M2SATA02 Port:4 Device:M2SATA02
Get M2SATA02 Port:6 Device:M2SATA02
Detect AHCI HBA:9c000000h==>
=====
Get M2SATA02 Dev:2
Set M2SATA02 Dev:0
Scan M2SATA02 verify is FAIL!

(Return Code = 255)... FAIL
```

# TST-M2SATA02 Rev0.1

乙、網通 LINUX 測試程式 sataspd.sh

執行 sataspd.sh 程式即會顯示相關參數說明及主程式指令範例。

```
Parameter error ! set the parameter is lose
./sataspd Speed Number
example : ./sataspd 6G 3
Press any key to try again!
Parameter error ! set the parameter is lose
./sataspd Speed Number
example : ./sataspd 6G 3
Press any key to try again!^C
root@testpc:~/gigabyte/prog2/sata/hddspeed/general/001# ./sataspd.sh 6.0 9_
```

sataspd.sh 6.0 [數量]

計算 sata 槽的 sata3.0 裝置數量

```
Get SATA Sum:9
***** Get SATA Port speed list as below *****
[ 2.606368] ata2: SATA link up 6.0 Gbps (SStatus 133 SControl 300)
[ 2.612944] ata5: SATA link up 6.0 Gbps (SStatus 133 SControl 300)
[ 2.619340] ata7: SATA link up 6.0 Gbps (SStatus 133 SControl 300)
[ 2.625625] ata4: SATA link up 6.0 Gbps (SStatus 133 SControl 300)
[ 2.631741] ata8: SATA link up 6.0 Gbps (SStatus 133 SControl 300)
[ 2.637862] ata3: SATA link up 6.0 Gbps (SStatus 133 SControl 300)
[ 2.643801] ata1: SATA link up 6.0 Gbps (SStatus 133 SControl 300)
[ 2.746366] ata14: SATA link up 6.0 Gbps (SStatus 133 SControl 300)
[ 2.751954] ata13: SATA link up 6.0 Gbps (SStatus 133 SControl 300)
*****
HD speed HD Total is difference
Set the HD speed number:8
Set the test speed value:6.0 Gbps
Press enter key to try again!_
```

測試時需確認代測插槽為 SATA，非 NVME

